

THE BRENWIN BUGLE



Seniors' Outreach Services
Of Bren Win Inc

A NEWSLETTER FOR OLDER ADULTS AND SENIORS IN DELORAINÉ, GOODLANDS, MEDORA AND WASKADA

“ASSISTING OLDER ADULTS, SENIORS, AND PEOPLE WITH DISABILITIES TO LIVE SAFELY AND INDEPENDANTLY IN THEIR OWN HOMES FOR AS LONG AS FEASIBLE.”



204-747-3283



sosbrenwin@gmail.com



www.sosbrenwin.com



VICTORIA LIFELINE
Safe and independent living.

Are you interested in Lifeline?

You can try it **one month for FREE** by mentioning the name of any other existing subscriber. They'll get a free month for the referral.

There are **no monthly contracts**. This promotion can be used with any Lifeline device.

Is your taxable income under \$16,000/year? Then you qualify for subsidized pricing - that is **over 50% OFF**

Call for the office for details.



CONGRATS

YVONNE LAVAL

YOU WON \$10 FROM THE BRAIN GAME DRAW.



Join our facebook group for the latest updates:
www.facebook.com/groups/sosbrenwin

I HAVE NOTHING BUT MY HEART AND I
HAVE GIVEN IT LONG AGO TO MY COUNTRY.

- LOUIS RIEL -



February 19th, 2024, we honour Louis Riel and what he did for the Métis and for our country.



SAVE THE DATE

CRIB WITH THE KIDS

Feb 1, 15 & 29

Coffee and snacks provided
Come play crib with the Grade 9 students

MAKE IT! MONDAYS

Feb 5, 19

Craft: Play with Clay, Painting
Location: The Centennial Apartments at 9am
Sponsored by SOS - FREE

WE'RE GOING SHOPPING!

Feb 21

Cost \$25/Person
Location: Brandon
(Shoppers Mall, Walmart)
Lunch: TBD (not included)

LUCKY LAPS SANDHILLS

Feb 27

\$30 per person
includes transportation and lunch
Weather permitting
More details to come

FEB 8

CRA/Service Canada

Know Your Benefits
(See Poster for Details)
Sponsored by SOS - FREE

DEEDUB

WALKING CLUB
OPEN 10AM-12PM
FEB 5,21,26,28

Seniors'
Outreach
Services
Of Bren Win Inc

CHECK ONLINE FOR UPDATES
OR FOR SPONTANEOUS EVENTS!
CALL 204-747-3283 TO RSVP.



MEDICAL EQUIPMENT LOAN PROGRAM

We have new equipment available for our loan program, including a new ice machine, walkers, wheelchairs, canes, and more. If you or somebody you know may benefit from this free program, please send them our way.

We are always accepting medical equipment donations to this program. If you or someone you know might be able to contribute, please call Bethany to arrange a pick up or drop off time.

Did you know - WE HAVE PARKING PERMITS for short term loans. Available at both SOS offices in Deloraine and Waskada. The RM of Brenda-Waskada Office also has a parking permit to loan out through SOS.

Hospital On Call Schedule

Deloraine Emergency Department sometimes experiences changes in schedule. If you need to attend the ED, please call 204-747-2745 to determine the nearest open emergency department. For any EMERGENT situation call 911.

Monday	Tuesday	Wednesday	Thursday	Friday	Saturday	
			1 Boissevain 8-4 Deloraine 8-4 Killarney Closed	2 Boissevain 8-4 Deloraine 24 hrs Killarney 24 hrs	3 Deloraine 24 hrs Killarney 24 hrs	
4 Deloraine 24 hrs Killarney 24 hrs	5 Boissevain 8-4 Deloraine 24 hrs Killarney 24 hrs	6 Boissevain 24 hrs Deloraine 8-4 Killarney Closed	7 Boissevain 8-4 Deloraine 24 hrs Killarney Closed	8 Boissevain 8-4 Deloraine 8-4 Killarney 24 hrs	9 Boissevain 8-4 Deloraine 24hrs Killarney 1700-0800	10 Deloraine 24 hrs Killarney 24 hrs
11 Deloraine 24 hrs Killarney 24 hrs	12 Boissevain 8-4 Deloraine 24 hrs Killarney 24 hrs	13 Boissevain 24hrs Deloraine 8-4 Killarney Closed	14 Boissevain 8-4 Deloraine 24 hrs Killarney Closed	15 Boissevain 8-4 Deloraine 8-4 Killarney 24 hrs	16 Boissevain 24 hrs Deloraine 8-4 Killarney 1600-0800	17 Boissevain 24 hrs Killarney 24 hrs
18 Boissevain 24 hrs Killarney 24 hrs	19 (Clinic Closed) Boissevain 24 hrs Killarney 24 hrs	20 Boissevain 24 hrs Deloraine 8-4 Killarney 8-4	21 Boissevain 8-4 Deloraine 24 hrs Killarney Closed	22 Boissevain 8-4 Deloraine 8-4 Killarney 24 hrs	23 Boissevain 24 hrs Deloraine 8-4 Killarney 24 hrs	24 Boissevain 24 hrs Killarney 24 hrs
25 Boissevain 24 hrs Killarney 24 hrs	26 Boissevain 8-4 Deloraine 24 hrs Killarney 24 hrs	27 Boissevain 24 hrs Deloraine 8-4 Killarney Closed	28 Boissevain 8-4 Deloraine 24 hrs Killarney Closed	29 Boissevain 8-4 Deloraine 8-4 Killarney 24 hrs		



MOVIE CLUB

UPCOMING SHOWS

MEMBERSHIPS TO BE RENEWED STARTING NOVEMBER 2

\$10/YEAR PLUS A SMALL DONATION AT EACH SHOW (IF YOU ARE ABLE)

ANNOUNCING: WEEKLY MOVIES UNTIL THE END OF MARCH (WEATHER PERMITTING)

Feb 15 - The Bucket List

Feb 22 - King Creole

Feb 29 - Field of Dreams

Mar 7 - Anne of Green Gables Finale (Pt 1)

Mar 14 - Anne of Green Gables Finale (Pt 2)

Mar 21 - The Best Exotic Marigold Hotel

Mar 28 - The Second Best Exotic Marigold Hotel

ALL SHOWS STARTING AT 1:30PM ON THURSDAYS

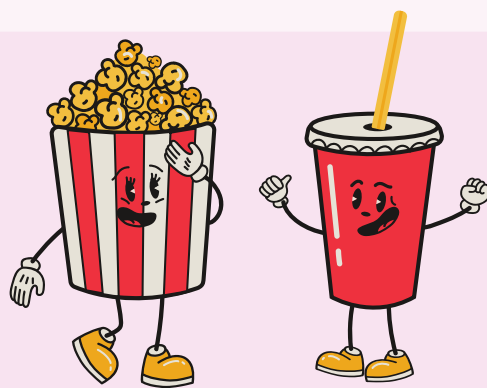
ALL **ONE STOP** HANDY VAN RIDES TO AND FROM MOVIE CLUB

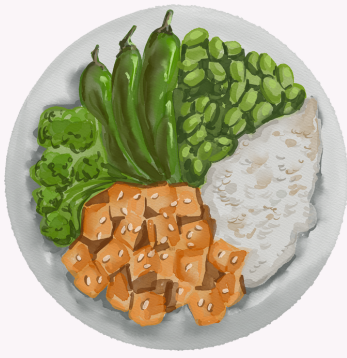
ARE SPONSORED BY SENIORS' OUTREACH SERVICES, STARTING NOVEMBER 2ND.

PICK UP MAY BE ARRANGED FROM THE WASKADA COMMUNITY CENTRE

IF BOOKED IN ADVANCE! PLEASE CALL BETHANY FOR MORE INFORMATION.

WWW.SOSBRENWIN.COM/MOVIE-CLUB





CONGREGATE MEALS

FEBRUARY MENU

Thurs, Feb 1 - Cooks Choice
Fri, Feb 2 - Fish
Mon, Feb 5 - Hamburger Casserole
Tues, Feb 6 - Swiss Steak
Wed, Feb 7 - Roast Pork
Thurs, Feb 8 - Cooks Choice
Fri, Feb 9 - - Fish
Mon, Feb 12 - Sausages
Tues, Feb 13 - Cheeseburger and Fries
Wed, Feb 14 - S&S Chicken
Thurs, Feb 15 - Cooks Choice
Fri, Feb 16 - Fish
Mon, Feb 19 - No Meal (Holiday)
Tues, Feb 20 - Chili
Wed, Feb 21 - Ham & Scalloped Potatoes
Thurs, Feb 22 - Cooks Choice
Fri, Feb 23 - Fish
Mon, Feb 26 - Breakfast Brunch
Tues, Feb 27 - Lazagna
Wed, Feb 28 - Roast Beef
Thurs, Feb 29 - Cooks Choice

only \$8

includes:

tea/coffee

main meal

dessert

Congregate Meals are available from Monday to Friday, excluding Holidays. They are located at the **Centennial Apartments' dining room** served at **11:30am**.

Please sign up the day before so Louise (our talented chef) knows how many to prepare for: **204-747-2299**

Take out available, but please bring your own container.

Drop-ins can not be accommodated, thank you for your understanding!



Seniors' Outreach Services
Of Bren Win Inc

UNDERSTAND YOUR BENEFITS AND TAX CREDITS

Join us for an informative presentation from the Canada Revenue Agency and Service Canada to help navigate updates to benefits and credits available (specifically to seniors) in Manitoba. There will be a question and answer period to make sure you leave with the information you need to ensure you get the best out of tax season!

- Disability Tax Credit - you may qualify!
- OAS, GIS and when to apply
- Home Accessibility Tax Credit
- and more!



THURSDAY
08 FEBRUARY, 2024



1:00PM-3:00PM



MOUNTVIEW CENTRE

COFFEE, TEA AND SNACKS PROVIDED

Please call to RSVP before Feb 6th.



204-747-3283



SEAN MAYTAS
CANADA REVENUE AGENCY



JEAN GAULTIER
SERVICE CANADA

HANDY VAN RIDES FROM WASKADA OR IN TOWN ARE SPONSORED - CALL TO BOOK A RIDE!



Canada Revenue Agency

SUBMIT YOUR BRAIN GAMES FOR A CHANCE TO WIN A \$10 GIFT CERTIFICATE. EMAIL, DROP OFF, OR PHONE FOR PICK UP!

Rhymonyms™



Introducing an all-new (and sometimes *tough*) word game! You may remember that SYNONYMS are words that mean the same, such as *nice and kind*. In this puzzle, you must replace each word with a synonym so that both words in each line rhyme.

Example: ooze, mound Answer: seep, heap

1. column, cultivator _____

7. whiter, adapt _____

2. hankie, concern _____

8. zeal, hatchet _____

3. ghost, slobber _____

9. trench, quiver _____

4. neckline, filth _____

10. bliss, arrest _____

5. songwriter, tumbler _____

11. perfumes, compact _____

6. lump, gossip _____

12. quirk, aristocrat _____

RIDDLE ME THIS, WHAT DISAPPEARS AS SOON AS YOU SAY ITS NAME?

RIDDLE: WHAT GETS BIGGER THE MORE YOU TAKE AWAY?

RIDDLE ME THIS, I'M TALL WHEN I'M YOUNG AND SHORT WHEN I'M OLD, WHAT AM I?



My name is _____

Valentine's Day

Word Search Challenge



Find and circle the words. They appear backward, forward, diagonal, and they overlap.

F Q N F D J K U H Y U Y M C F S W E E M L B W B
 I G I L I P J L S E R U E P S O H E J M K B P Q
 M N K O P T A E R A A Y L U F P M S R F I N E C
 D I M W U I I V U Q R R P B C E E K D T M L I F
 A R C E C R W R V L A Q T M M E B C A N P J H P
 G A W E A A B L E N D C C T I S L R I Q E J V T
 B H P C Q E R W L K K E P S D N I E U N B I P J
 O S T U F F E D A N I M A L S M A N B A B U R S
 X W E B P J W J S M S N W T D Q I D L R J E E F
 O E X T F X Y E I R F B D A F P U Q E E A N V I
 F E V S A D M I R A T I O N S J S F L F I W W D
 C T X O H L O V I N G L Y T E E W E M T F C B N
 H H M C Q A O W Q R N C R W I S C K N W B U D A
 O E G N I R A C E K E A E D Y P S E C T W S T C
 C A H V L X L R O S E J N X K M L U U J I N K S
 O R E G N I V O L H E A R T W A R M I N G R G M
 L T E T A R B E L E C D S D V N B E M I L O H B
 A C P I H S D N E I R F L O W E R B O U Q U E T
 N C F S H A R I R D B O O L Y J P V W A Y I A G
 H E A R T W A R M R R O B X Y A A E H T E E W S
 B V A L E N T I N A H O X H O L H B E N E N I K
 B L J L O V A F C C D E R O E B E M I N E O A Y
 F L O W E R B O U Q F S E H F H E A R Q R E R C
 W N J C C U P I E F F U T S A C Y H L E W E J H

ADMIRATION
 BE MINE
 BOX OF CHOCOLATES
 CANDIES
 CARDS
 CARING
 CELEBRATE
 CUPID

FEBRUARY
 FLOWER BOUQUET
 FRIENDSHIP
 HEARTS
 HEARTWARMING
 JEWELRY
 KINDNESS
 LOVINGLY

PINK
 RED
 SHARING
 SPECIAL
 STUFFED ANIMALS
 SWEETHEART
 VALENTINES